



CX20 Series Handheld Thermal Camera

Provided with an infrared detector with a 256×192 resolution, CX20 Series employs real-time AI super-resolution to enhance its resolution to 512×384. Featuring a 3.5-inch HD display and optional laser pointer and rangefinder, it enables precise fault location and significantly improves inspection efficiency.



Product Highlights

High-Resolution Thermal Imaging, Powered by Real-Time AI Super-Resolution

- 256×192 resolution, enhanced to 512×384 with real-time AI super-resolution
- NETD as low as 40mK, detecting minute temperature differences
- 3.5-inch high-resolution display, presenting thermal images in detail



Laser Pointer + Laser Rangefinder

- The CX20 Pro/Ultra models feature an upgraded laser pointer for fast targeting of temperature anomalies
- The CX20 Ultra further integrates a laser rangefinder, enabling 3D spatial positioning of anomalies and enhancing on-site inspection efficiency



Fully Upgraded User Experience

- 18W quick charging ensures worry-free performance during intensive operations
- Built-in Wi-Fi and UVC image transmission across the entire series for faster and wireless image sharing



Software+ : Complete Software PC Client and App

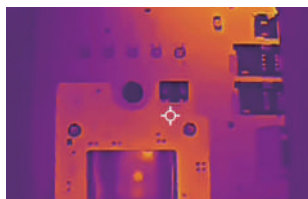
- Equipped with a professional mobile/PC temperature analysis platform, supporting secondary analysis



Specification

Model	CX20	CX20 Pro	CX20 Ultra
Thermal Imaging			
Detector Type	12μm		
Infrared Resolution	256×192		
Super-Resolution	512×384		
Spectral Band	7.5-14μm		
NETD	<40mK		
Infrared Frame Rate	25Hz		
Focal Length	3.2mm	4.3mm	
FOV	56°×42°	40°×30°	
Spatial Resolution (IFOV)	3.8mrad	2.79mrad	
Focus Mode	Fixed focus		
Minimum Imaging Distance	0.3m	0.7m	
Measurement Range	Low temperature range: -20~150°C; high temperature range:100~550°C; auto switching		
Measurement Accuracy	±2% or ±2°C of readings, whichever is greater		
Image Display			
Display	3.5-inch, 480×640 resolution		
Visible Light Camera	/	2 megapixels	
Digital Zoom	2×, 4×		
Palettes	7		
Image Mode	Infrared	Infrared, fusion, PIP, visible light	
Temperature Width Stretch	Automatic/Manual		
Measurement and Analysis			
Analysis Functions on the Device	Central point/Highest temperature point/Lowest temperature point/3 custom points/Temperature difference		Central point/Highest temperature point/Lowest temperature point/6 custom points/Temperature difference
Laser Pointer	Not support		Support
Laser Rangefinder (class 1)	Not support		Support, max detection range: 4m
Supporting Software	PC (Infrared Analysis Software) or Mobile (iOS/ Android APP)		
Image Storage			
Storage Medium	32GB Internal Memory		
System Functions			
Temperature Alarm	Support full-frame highest/lowest temperature alarm; automatic image capture at alarm time (with temperature data)		
Alarm Type	Image pop-ups	Image pop-ups, flash prompts	
Video Transmission	UVC (including full-frame temperature data) + Wi-Fi (excluding full-frame temperature data)		
Communication Protocol	USB, Wi-Fi		
Power Management	Adjustable (Automatic shutdown, 5 min, 10 min, 20 min, 120 min)		
Others			
Battery	Built-in rechargeable lithium-ion battery		
Charging Mode	USB Type-C		
Battery Life	6h		
Tripod Socket	Support		
Operating Temperature	-10°C ~ +50°C		
Operating Humidity	10% ~ 95% (non-condensing)		
Storage Temperature	-20°C ~ +60°C		
IP Grade/Drop Protection	IP54/2m		
Shock and Vibration	Shock: 25g (IEC 60068-2-27); vibration: 2.5g (IEC 60068-2-6)		
Weight and Dimensions	500g, 246×101×85mm		
Authentication	CB/CE/CMA		
Packing List	USB cable, user manual, certificate of qualification, calibration certificate, portable bag	USB cable, user manual, certificate of qualification, calibration certificate, charger, portable bag	

Applications



Circuit Maintenance



Power Maintenance



HVAC Leak Detection



Equipment Maintenance

Raythink Technology Co., Ltd.

Company Address: No.5 Wanshoushan Road, Fulaishan Street, Yantai Area of China (Shandong) Pilot Free Trade Zone
Postal Code: 264000 Official Website: <http://www.raythink-tech.com> Service Email: sales@raythink-tech.com

*The information is for illustrative purposes only. The pictures and technical specifications are subject to change without prior notice. Sample No.: G2025-CX20-2P001