



# EX10 Series Handheld Thermal Camera

Provided with an infrared detector with a 160×120 resolution, EX10 Series employs real-time AI super-resolution to enhance its resolution to 320 ×240. Featuring a 2.8-inch HD display, video recording, UVC+WiFi\* screen projection and optional laser pointer\*, the device can be widely used in household maintenance, electrical maintenance, HVAC leak detection, automotive repairs and other fields.



## High-Resolution Thermal Imaging



160×120 Infrared Resolution



320×240 AI Super-resolution

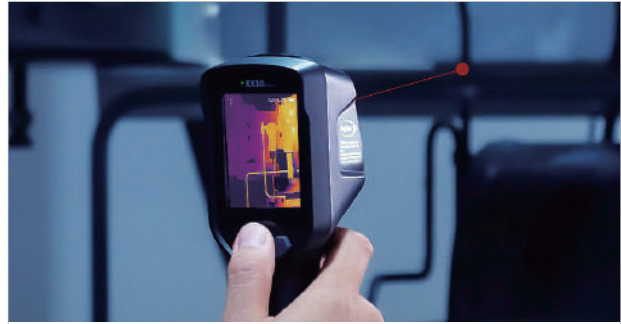


40mK



2.8 inch screen

## Intelligent Inspection



Laser pointer\* for quick localization



-20°C~550°C; auto switching



Video recording



WiFi\*+UVC



Quick Start



8GB Storage



IP54 Protection

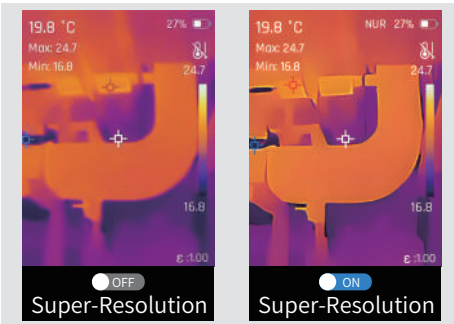


≥10h Battery Life

## Specification

Model	EX10	EX10 Pro
Infrared Resolution	160 × 120	
Detector Type	12μm Uncooled infrared detector	
Super-Resolution	320 × 240	
NETD	40mK	
Infrared Frame Rate	25Hz	
Focal Length	2.6mm	
FOV	40° × 30°	
Focus Mode	Fixed focus	
IFOV	4.62 mrad	
Minimum Imaging Distance	11cm	
Measurement Range	-20~150°C; 100~550°C; auto switching	
Measurement Accuracy	±2°C or ±2% of readings (whichever is greater)	
Analysis Functions on the Device	Central point / Highest temperature point / Lowest temperature point / 3 custom points	Central point / Highest temperature point / Lowest temperature point / 6 custom points
Display	2.8-inch; 240 × 320 resolution	
Visible Light Camera	/	2 megapixels
Connection Mode	USB2.0 Type-C	
Laser Pointer	Not support	Support
Supporting Software	PC (Infrared Analysis Software)	PC (Infrared Analysis Software) or Mobile (iOS/ Android APP)
Battery	2750mAh lithium-ion battery	
Battery Life	≥10 hours	
IP Grade/Drop Protection	IP54/2m	
Weight and Dimensions	257g ± 10g (including battery), 206.9 × 67 × 81.5mm	265g ± 10g (including battery), 206.9 × 67 × 81.5mm
Authentication	CE/FCC/DGM/CMA	

### Enhanced Thermal Image with Super-Resolution



### Multiple Image mode



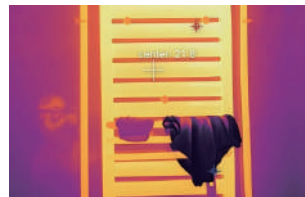
## Applications

### Household Maintenance



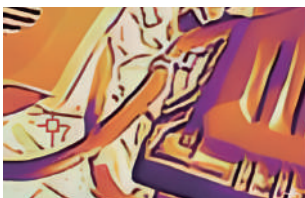
Quickly detect heat loss, moisture issues, and electrical faults in homes

### HVAC Leak Detection



Identify temperature anomalies and pinpoint HVAC-related leaks

### Automotive Maintenance



Inspect engines, brakes, and electrical systems for temperature irregularities

### Equipment Maintenance



Detect abnormal heat patterns in machinery and electrical equipment

## Raythink Technology Co., Ltd.

Company Address: No.5 Wanshoushan Road, Fulaishan Street, Yantai Area of China (Shandong) Pilot Free Trade Zone Postal Code: 264000

Official Website: <http://www.raythink-tech.com> Service Email: [sales@raythink-tech.com](mailto:sales@raythink-tech.com)

\*The information is for illustrative purposes only. The pictures and technical specifications are subject to change without notice. Sample No.: G2025-EX10-2P001